



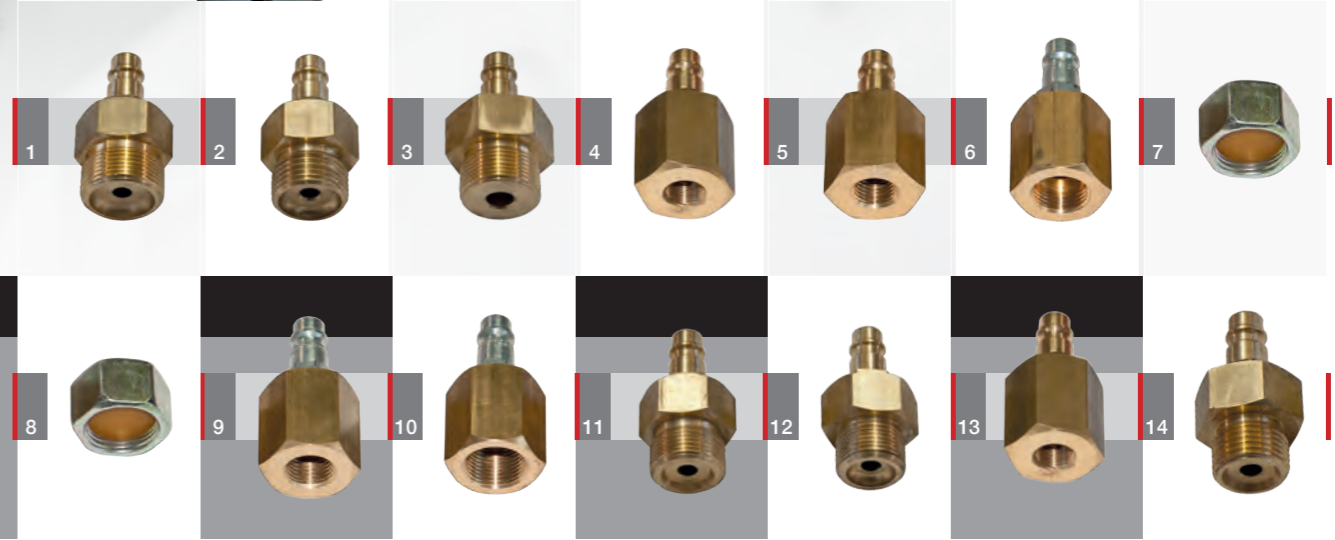
• Exact pressure setting.

Hose testing device SPG Simply safe

STRENGTHS AT A GLANCE

- HIGH OPERATOR PROTECTION THROUGH SHATTER-PROOF POLYCARBONATE HOOD
- PRACTICE-ORIENTED TESTING OF FIRE EXTINGUISHER HOSES

• Art.-No. 186405
The hose testing device SPG can test all fire extinguisher hoses.

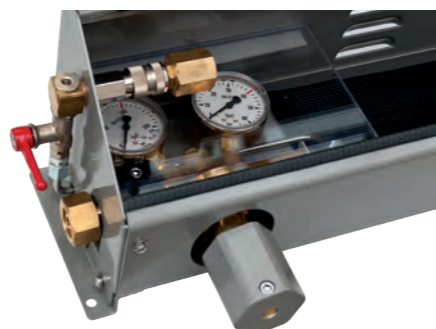


• Testing connectors. (accessories)



Pressure testing of fire extinguisher hoses

The **hose testing device SPG** can test all fire extinguisher hoses with pistols for pressure resistance and gas-tightness. In the **SPG** the fire extinguisher hoses are tested in extended length. The device is connected by a high pressure hose (250 bar) to a nitrogen cylinder. The pressure reducer installed in the device is set to the required test pressure.



• Manometers for inlet and test pressure.

Special compressor

Sound-insulated special compressor with max. 20 bar operating pressure.



• Art.-No. 187067

The fire extinguisher hose to be tested is coupled to the **SPG** with the matching testing connector. For safety reasons, the transparent safety cover must be closed. The ball valve for testing the fire extinguisher hose can then be opened. After the test the ball valve is closed. The hose vents automatically. The safety cover can be opened to remove the fire extinguisher hose. A hose connection (M22 x 1.5 flat or conically sealing) is included testing connector with the **SPG**.

Testing connectors (surcharge)

Description	Art. No.	Description	Art. No.
1 Testing connector M 26x1.5 EXT. for Wintrich, Total P 50	187166	10 Testing connector M 20x1.5 INT. for Neuruppin, Bavaria Quick	187175
2 Testing connector R½" EXT. for Weber	187167	11 Testing connector M 22x1.5 EXT. for Gloria, Werner, Total GI	187176
3 Testing connector M 24x1.5 EXT. for Bavaria P 50	187168	12 Testing connector M 20x1.5 EXT. for Total GS	187305
4 Testing con. M 12x1 for Bav. GI INT.	187169	13 Testing connector M 22x1.5 INT. for Jockel P 6 J40	187308
5 Testing connector M 14x1.5 INT. for Vulkan, Wintrich	187170	14 Testing connector G ¾" EXT. for Gloria P 50	187309
6 Testing connector M 18x1.5 INT. for Minimax, Gloria PS/PE	187171	15 Testing connector M 30x1.5 EXT. for Gloria P 250	187319
7 Testing con. closing cap M 22x1.5 INT.	187172	16 Testing connector M 24x2 EXT. for Döka GI 6/12, Total GX	187313
8 Testing con. closing cap M 26x1.5 INT.	187173		
9 Testing connector M 16x1.5 INT.	187174		

Hose testing device SPG (EN ISO 12100-1, EN ISO 12100-2)

• Art.-No. 186405



Inlet pressure: max. 200 bar.
Test pressure: max. 30 bar.
Dimensions: Height [mm]: 230, Width [mm]: 1150, Depth [mm]: 215.
Weight [kg]: 18. Surface: zinc plated.

Special compressor

(EN ISO 12100-1, EN ISO 12100-2, EN 60204)

• Art.-No. 187067

Operating pressure: max. 20 bar.
Suction capacity: 160 L/min.
Filling volume: 125 L/min. Electric motor: 230 V, 50 Hz, 1.1 kW, 3000 rpm. Sound pressure level: 60 dB(A) Pressure vessel: 4 l. Dimensions: Height [mm]: 510, Width [mm]: 350, Length [mm]: 570. Weight [kg]: 31.

TECHNICAL DATA